



Children & Youth Services



Individuals & Family Services



Older Adults Services

# CASA CENTRAL

ANNUAL REPORT  
FISCAL YEAR  
**2025**



JULY 1, 2024 - JUNE 30, 2025

## Our Mission

Casa Central drives change by empowering individuals and families to thrive—delivering impactful services that transform lives and uplift communities.

## Our Vision

Through our advocacy and service, individuals, families, and communities reach their fullest potential and thrive.





**LETTER FROM**  
MARTIN R. CASTRO,  
PRESIDENT & CEO

**Dear Friends,**

Every day at Casa Central, we see what becomes possible when a community chooses hope. We see it in the determination of parents striving for stability, in the curiosity of children discovering their potential, and in the resilience of older adults who continue to inspire us. These moments remind us why our mission matters—and why compassion, dignity, and opportunity remain the heart of everything we do.

Since 1954, Casa Central has grown and evolved alongside the communities we proudly serve. Through changing times and shifting challenges, our commitment to walking together with individuals and families on their journey toward a brighter future has never wavered. This Fiscal Year 2025 Annual Report reflects not only the work we have accomplished, but the collective strength of a community that refuses to give up on one another.

Today, as we navigate an environment filled with uncertainty, we are especially grateful. These are challenging times, and yet we continue to move forward because of the extraordinary generosity of our donors, partners, volunteers, and friends. Your belief in our mission ensures that every person who comes to Casa Central finds a place of safety, opportunity, and belonging. You make our work possible.

Our impact is a shared achievement. Together, we have built programs that uplift and empower at every stage of life—from early learning and after-school enrichment, to housing and family support, to violence prevention, to compassionate care for older adults.

These programs do more than respond to immediate needs; they open doors, expand possibilities, and strengthen the foundation of our communities.

I am deeply grateful for the leadership of our Board of Directors and for the ongoing commitment of our Emeritus Advisory Board and Emerging Leaders Auxiliary Board (ELAB). Their guidance and engagement continue to advance our vision and deepen our impact.

The progress we highlight in this report—and the thousands of lives touched—are the result of this shared dedication.

As we look toward the future, I am filled with optimism and resolve. The challenges ahead are real, but so is our collective ability to meet them. With your ongoing support, Casa Central will continue building a Chicago region where every person has the opportunity to grow, succeed, and thrive.

We are stronger together—and together, we will continue transforming lives for generations to come.

With heartfelt gratitude,

Martin R. Castro, Esq.  
President & CEO



## CASA CENTRAL PROGRAM SUMMARY

# OUR COMMITMENT TO LIFELONG SUPPORT AND STABILITY

### EMPOWERING CHILDREN, FAMILIES AND OLDER ADULTS

At Casa Central, we are committed to ensuring that every person receives steady support during life's most difficult moments. Each year, our services reach thousands of individuals and families across the Chicago region, offering care that honors their dignity and responds to their unique needs.

Through our three core service areas — **Children and Youth Services**, **Individuals and Families**, and **Older Adult Services** — we provide award-winning, evidence-based programs that promote growth, stability, and long-term health and well-being. From early learning and youth development to violence prevention, housing support and older adult care, Casa Central works alongside our community to build lasting pathways to resilience and a brighter future.



# Children & Youth Services

## INSPIRING LIFELONG LEARNING

We support children's healthy development and long-term success from birth through age 12. Our **Early Learning Academy** (ELA) offers bilingual, home- and center-based early childhood care and education that nurtures social-emotional, cognitive, and physical growth while preparing children for kindergarten. This includes **Creciendo Juntos: A Preparing for Life Program**, a home-visiting model delivered in partnership with the University of Chicago's Center for the Economics of Human Development and Preparing for Life in Dublin, Ireland, providing families with personalized support from pregnancy to age five. For older children, our **School Age Program** delivers year-round academic enrichment, homework help, mentoring, recreation, and social-emotional learning in a safe, engaging environment. Together, these programs create strong foundations for lifelong learning and success.



## NAVIGATING A CHALLENGE:

### HOME-BASED SUPPORT FOR TARA AND HER FAMILY

*Tara and her children had been participating in the Early Learning Academy Home-Based program for a couple years when two of her children received diagnoses confirming developmental disabilities. Determined to support them, Tara wanted to understand every service available—therapy options, medical appointments, school evaluations, and financial resources—but the process quickly became overwhelming. Managing all this with limited finances added constant pressure.*

*A dedicated home visitor from our Early Learning Academy Home-Based program met with the family every week, gradually building a strong, trusting relationship. She helped Tara track each child's developmental milestones, explained therapy recommendations in clear language, and coached her on how to advocate during school Individualized Education Program meetings. Our home visitor encouraged the family to stay actively engaged with early Intervention and coordinated communication between therapists, medical providers, and the program to ensure continuity of care.*

*She also supported Tara through the complex process of applying for Supplemental Security Income (SSI) benefits—helping her gather medical documentation, complete forms, prepare for interviews, and follow up on case updates.*

*With her guidance, Tara successfully secured SSI for herself and both children, providing crucial financial stability.*

*Today, Tara's children are receiving the specialized services and support they need. With SSI easing the family's financial burden, Tara can focus on her children's progress rather than constant worry. Most importantly, Tara now feels confident, informed, and empowered—fully equipped to advocate for her children's needs and future.*



# Individuals & Families

## PROVIDING SAFETY AND FOSTERING SELF-RELIANCE

We offer essential support that help individuals and families build stability, heal from trauma, and work toward independence. Our **La Posada Transitional Housing** program provides temporary, fully furnished apartments and comprehensive wraparound services for families experiencing homelessness, including case management, job readiness training, financial education, counseling, and housing navigation. Through **Intact Family Services**, we partner with families involved with the Illinois Department of Children and Family Services to keep children safely in their homes by offering crisis intervention, skill-building, parenting education, and stabilization support. Our **Violence Prevention and Intervention (VPI)** program provides trauma-informed counseling, advocacy, and safety planning for individuals and families affected by domestic violence and other trauma, with particular focus on supporting children from birth to age five. These programs work together to strengthen families, promote safety, and create pathways to long-term self-reliance.



## STARTING OVER:

### HOW LA POSADA HELPED ANGIE'S FAMILY TURN A CORNER

*After losing her housing in Milwaukee, single mother Angie returned to Chicago with her sons, hoping to stay with family until she could regain stability. But a family conflict left her without a home, and she soon found herself calling 311 in search of emergency shelter.*

*When a space opened at La Posada, Casa Central's transitional housing program, Angie and her boys were transported there and welcomed into a safe, furnished apartment. She felt immediate relief upon arrival. La Posada staff provided essential items—bedding, food, hygiene supplies, and cleaning products—so the family could settle in comfortably that first night.*

*Throughout her stay, Angie worked closely with her case manager, who helped her access public benefits, secure medical care, and connect with other essential community resources. Together, they built a consistent daily routine and set clear, achievable goals to support her progress toward independence.*

*Angie's active participation in the program's EDUCATE training sessions also played a key role in her growth. She successfully completed the Job Readiness program, where she learned how to rewrite her résumé, tailor it to different job openings, search and evaluate job listings more effectively, complete online applications, and practice interview skills.*



*These hands-on lessons strengthened her confidence and prepared her for long-term stability.*

*Within a year, Angie and her sons exited the program and moved into permanent housing. She left La Posada determined to rebuild stability for her family—proud of the progress she had made and empowered by the steps she took toward a brighter future.*

# Older Adult Services

## PROMOTING ACTIVE, HEALTHY LIFESTYLES

We help older adults maintain their independence, dignity, and overall, well-being. At the **Adult Wellness Center (AWC)**, adults age 60 and older participate in a vibrant community setting that offers daily activities such as arts and crafts, fitness classes, music and dance, yoga, cultural outings, games, celebrations, nutritious meals, and door-to-door transportation. We also offer **Home Care Services**, which enable older adults to remain safely in their homes through in-home support for critical everyday needs such as dressing, meal preparation, housekeeping, shopping, companionship, and medication reminders. Our trained caregivers and supportive environment ensure that participants can stay active, connected, and engaged while maintaining the highest possible quality of life.



## FINDING HERSELF AGAIN

### ANA'S STORY: RECLAIMING JOY, CONNECTION, AND COMMUNITY AT CASA CENTRAL

*Ana, an 89-year-old widow, lost her husband just over a year ago. After his passing, her son brought her into his home so she wouldn't have to live alone. But as time went on, Ana sank deeper into depression, grieving not only the loss of her husband, but also the home and routine that had defined her life for decades.*

*Concerned for her emotional wellbeing, her son searched for support. Through conversations with his doctor and the Illinois Department on Aging, he learned about Casa Central's Adult Wellness Center (AWC). After an assessment, Ana was approved to attend the program three days a week.*

*More than five months later, Ana has rediscovered a sense of comfort and belonging. "It feels welcoming, like being with family," she shared. "The staff greets me every morning, they treat me with respect, I've made friends—and best of all, they taught me how to knit. Now I'm making clothes for my granddaughter!"*

*Ana enjoys spending time with the friends she's made at the AWC, participating in creative activities, and exploring new skills. When asked whether she feels happier now, she smiled and said, "My happiest moment was reciting a poem for my husband at our Valentine's Day celebration. I don't feel sad anymore."*



*At the AWC, Ana found more than daily support—she found connection, purpose, and joy. And while she loves living with her family, she no longer feels confined by it. Her story shows just how transformative the right support can be—and reminds us that every older adult deserves a life that is full, active, and meaningful.*

# EVENTS

## HIGHLIGHTS FROM FY25

### Three Kings Day

The Three Kings made their annual January 6 visit to the Adult Wellness Center, the Early Learning Academy, and the School Age Program, bringing gifts and plenty of smiles to all our participants.



### The Best Foot Forward Shoe Drive

In March, the Best Foot Forward Shoe Drive — held in partnership with the McDonald's Hispanic Owner-Operators Association (MHOA) — provided children in our Early Learning Academy Center-Based program, School Age Program, and La Posada Transitional Housing program with brand-new gym shoes, delivered personally by Ronald McDonald. Thanks also to the Mendez Group, Golden State Foods Foundation, and Hernandez & Garcia, LLC, for helping bring so many smiles to our participants.

### Blue Ribbons for Child Abuse Prevention Month

In April, staff from the Intact Family program tied bright blue ribbons along the front fence of the Casa Central building in recognition of Child Abuse Prevention Month. Children from the Early Learning Academy Center-Based program joined the effort and received pinwheels, a symbol of awareness and hope tied to this important cause.



# EVENTS

## HIGHLIGHTS FROM FY25

### Back-to-School Block Party

Our annual Back-to-School Block Party took place in July, where children received free backpacks and school supplies. The event featured games, food, music, and plenty of fun to celebrate the upcoming school year and bring the community together.



### Harvest Fest

Our Harvest Fest took place in September, marking the close of summer with a celebration of wholesome foods. The festival featured hands-on workshops, community art and craft projects, and free fresh fruits and vegetables for all attendees.



### Annual Gala: Celebrating 70 Years of Service

Our Annual Gala celebrated Casa Central's 70 Years of Service and featured a vibrant 1970s disco theme. Our largest fundraising event of the year included auctions, dinner, live music, and plenty of dancing, all highlighted by inspiring remarks from our Pastora San Juan Cafferty Award recipient, Karen Freeman-Wilson, President & CEO of the Chicago Urban League. Our Philanthropic Partner Award for the year was given to the Irving Harris Foundation, for their vitally important support of Casa Central's programs.



# WHO DID CASA CENTRAL SERVE IN FY25?

**4,465**

Individuals  
& Families  
Impacted

**61%**

**Primary Participants  
Are Age 63+**

**18%**

**Primary Participants  
Are Age 0 - 5**

## PARTICIPANT SATISFACTION RESULTS

Casa Central participants respond to an annual Participant Satisfaction Survey. Used to measure the level of satisfaction of services offered, the survey allows Casa Central to monitor the quality of programming and make participant-driven decisions. The participants responding reported:

**96%**

of participants are satisfied with the services they are receiving

**92%**

of participants would choose Casa Central again if they were given the option to choose among similar service providers

**90%**

of participants feel their quality of life has improved as a result of Casa Central

# PROGRAM HIGHLIGHTS:

NUMBERS FROM FY25

## Intact Family

**100%**

of families in the program remained intact during the period of service provision

## ELA-Home Based

**100%**

of parents/caregivers reported they have increased their understanding of their child's development

## Violence Prevention & Intervention

**100%**

of participants reported being better able to support their needs and those of their children after experiencing trauma

## La Posada

**100%**

of participants who successfully completed the 5-part Job Readiness training series reported improvement in their job seeking skills

## Adult Wellness Center

**98%**

of participants surveyed reported a sense of social connectedness as result of participating in AWC

## Older Adults Home Care Services

**97%**

of participants reported that they feel emotionally and/or physically safer as a result of receiving home care services

## ELA-Center Based

**97%**

of children obtained a medical and dental home by the end of the program year.

## School Age Program

**92%**

of students reported that the program helps them be more academically successful at school

Read more results and statistics on our **FY25 Impact Report:**

[www.casacentral.org/our-story/our-values-impact/](http://www.casacentral.org/our-story/our-values-impact/)

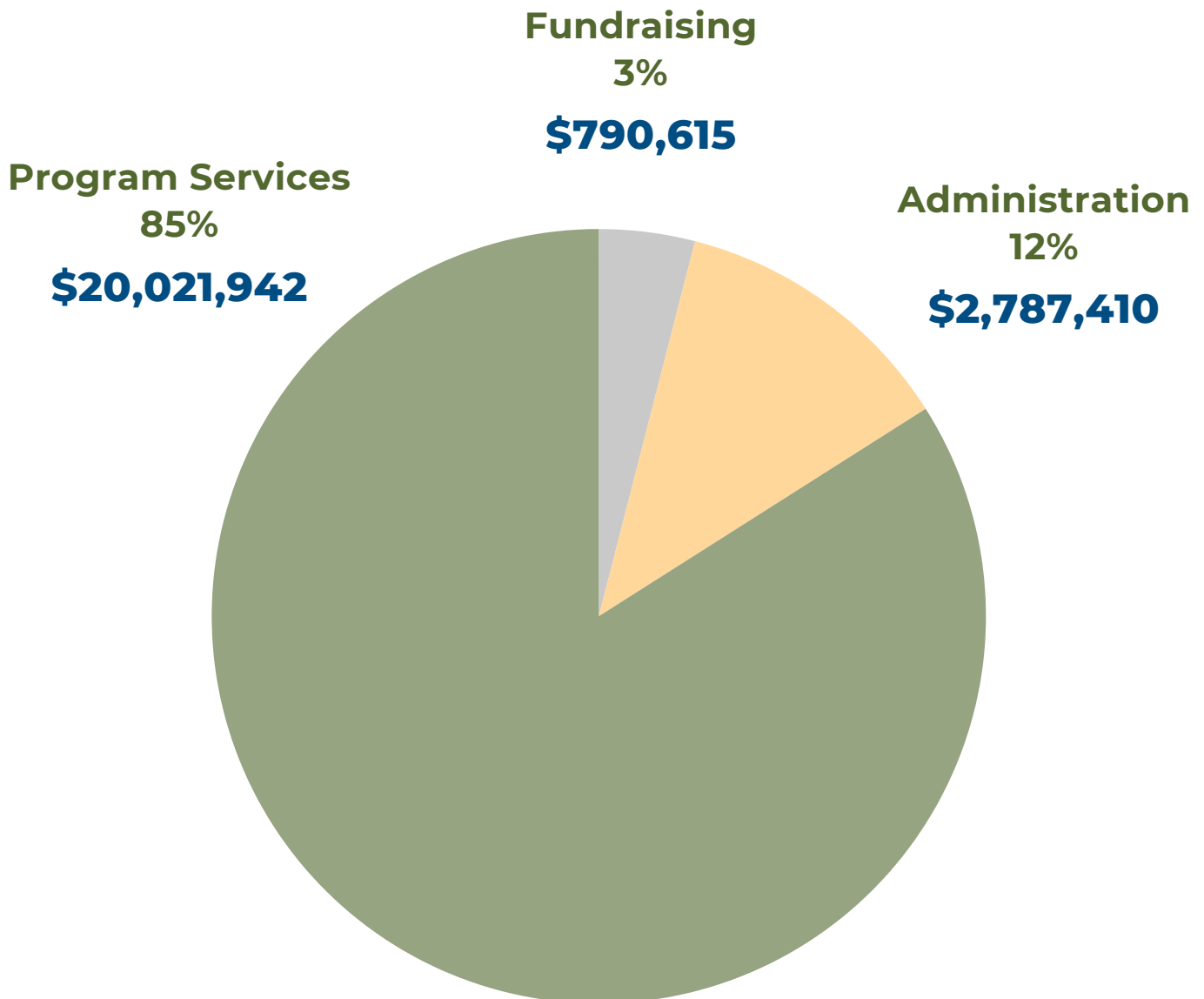
# HOW FUNDS ARE USED:

85% OF FUNDING GOES DIRECTLY TO PROGRAMS

Total expenses:

**\$23,599,967**

- Program Services (85%)
- Administration (12%)
- Fundraising (3%)







# FINANCIALS

FISCAL YEAR ENDED JUNE 30, 2025

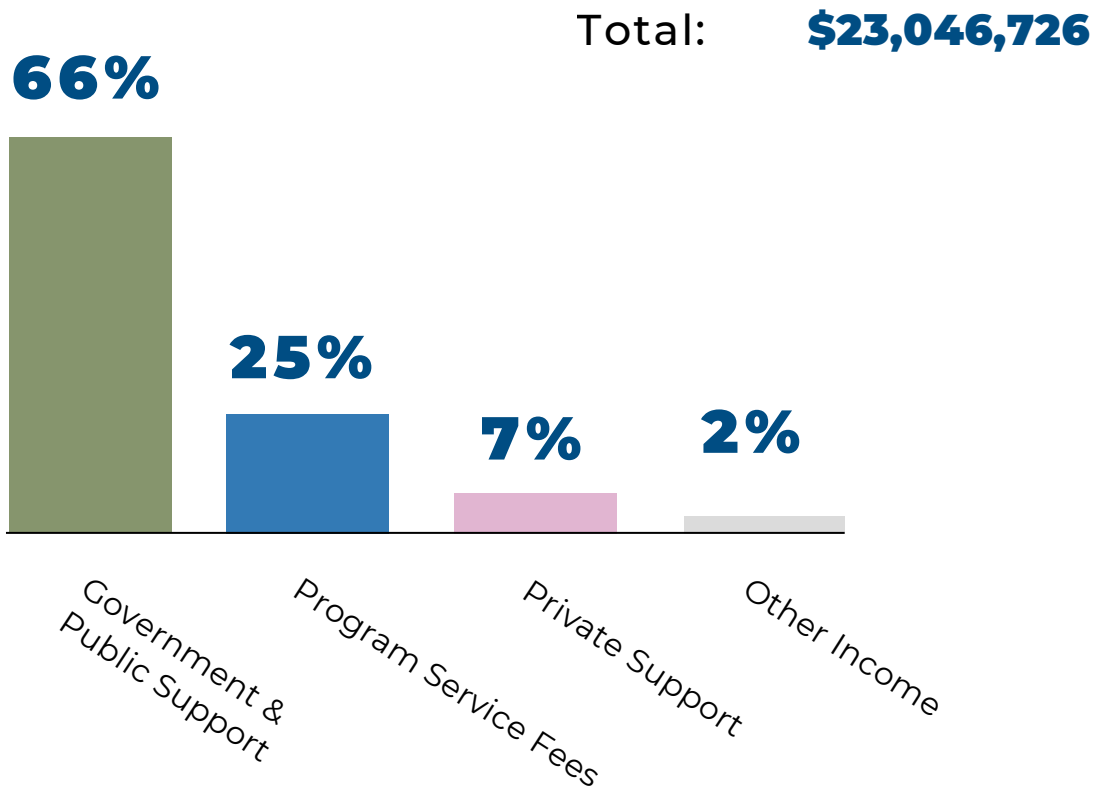
Total Revenue: **\$23,046,726**

## Revenue Sources

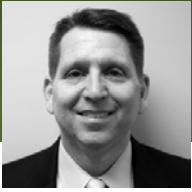
---

	Government & Public Support	<b>\$15,167,876</b>
	Program Service Fees	<b>\$5,842,084</b>
	Private Support	<b>\$1,619,196</b>
	Other Income	<b>\$417,570</b>

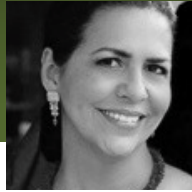
---



# BOARD OF DIRECTORS



**Joseph Teller**  
Board Chairperson  
Owner, Clearstory Glass



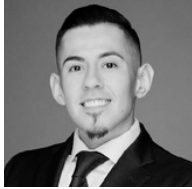
**Dr. Rosita Lopez**  
Board Vice Chair  
Professor Emeritus,  
Northern Illinois University in DeKalb  
(Retired)



**Purva Sule**  
Board Secretary  
Head of Strategy for  
US Wealth Management,  
BMO



**David Delgado**  
Board Treasurer  
Retired, CPA - Partner  
Crowe Horwath LLP



**Berto Aguayo**  
Board Member  
Intellectual Property Attorney  
K&L Gates / CEO, Increase the Peace, Chicago



**Jose Alba**  
Board Member  
Director, Real Estate Corporate  
Banking, Bank of America



**Jessica Andujar-Redman**  
Board Member  
Executive Vice President,  
Business Development  
World Business Chicago



**Salvador Arana**  
Board Member  
VP, Operations Peoples Gas  
& North Shore Gas Company



**Gloria Barbarotta**  
Board Member  
Strategy and Commercialization -  
Partnership Brands, PepsiCo



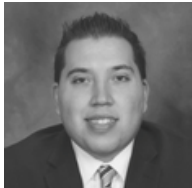
**Janie Cervera**  
Board Member  
Managing Director & Head  
of Client Field Services  
BMO



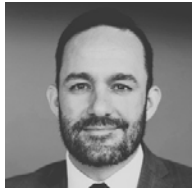
**Dora M. Cornelio**  
Board Member  
Attorney,  
Schmidt Salzman & Moran, Ltd.



**Michael Cruz**  
Board Member  
Senior Customer Success  
Manager, Adobe



**David Escontrias**  
Board Member  
Vice President of Domestic Sales  
Citizens Inc.



**Julian Federle**  
Board Member  
Amazon, Inc. / Technology / E-Commerce



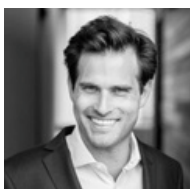
**Maureen Flood**  
Board Member  
Partner/People Advisory Services,  
EY



**Karen Freeman-Wilson**  
Board Member  
President & CEO,  
Chicago Urban League



**Jennifer Lopez**  
Board Member  
Culinary Lead,  
Arclight Cinemas



**Raphael Rastelli Fagnani Pani**  
Board Member  
Vice President,  
Macquarie



**Marco Romero**  
Board Member  
President & Owner,  
iBuilders Corp.



**Mark Shulman**  
Board Member  
Head US Consumer Lending &  
Chief Community Reinvestment Officer,  
BMO



**Vania Wit**  
Board Member  
Vice President and  
Deputy General Counsel,  
United Airlines Legal Department

# EMERGING LEADERS AUXILIARY BOARD

Members of the Emerging Leaders Auxiliary Board (ELAB) serve as ambassadors for Casa Central and help support the programs, activities, and communities Casa Central serves through fundraising events, volunteer services, and professional engagement.



**Oscar Aguinaga**  
Financial Advisor, Morgan Stanley



**Roberto Arroyo**  
Sr. Engineer, People's Gas



**Ivelice Blanco**  
Human Resources Manager,  
Mittera Group Illinois



**Dora Cornelio**  
Associate Attorney, Schmidt,  
Salzman & Moran, Ltd.



**Jessica Muñoz**  
Senior Insurance Strategy  
and Insights Analyst,  
Zurich



**Luis Narvaez**  
Associate Vice Chancellor for  
Education, City Colleges of  
Chicago



**Saul Pagan**  
Community Relations  
Coordinator,  
Meridian Health/Centene  
Corporation



**Ruby Palmerin**  
Mid-Market Sales  
Development, Asana



**Saira Puga**  
Automation Business Analyst,  
Accelirate Inc.



**Carla Robles**  
Director of Business Dev. -  
Real Estate, Polsinelli



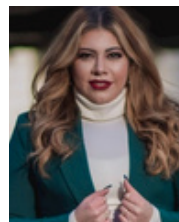
**Ismael M. Rocha**  
Assistant Vice President,  
Unit Manager  
BMO Virtual Connect



**Nicholas Ramos**  
Caseworker, Office of U.S.  
Senator Tammy Duckworth



**Jeff Sprau**  
Senior Director,  
EY – Parthenon



**Jasmin Zamora**  
Director, Engagement and  
Inclusion, Cision

# EMERITUS ADVISORY BOARD

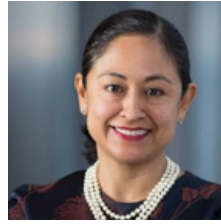
Casa Central inaugurated its Emeritus Advisory Board (EAB), which recognizes the dedication and leadership of former board members and other community leaders who contribute time, energy, and resources to Casa Central.



**Adela Cepeda**  
Board Member,  
BMO Harris Bank



**Diana Palomar**  
Vice President of Community  
Engagement, ABC7 Chicago



**Amalia Rioja**  
Attorney, Rioja LLC



**Cesar Rolon**  
Founder & Producer, Imagen  
Marketing Consultants, LLC



**Carmen Solano-  
DeCarrier**  
McDonald's Owner/Operator

# CASA CENTRAL TEAM

## SENIOR MANAGEMENT TEAM



**Martin R. Castro**  
President & CEO



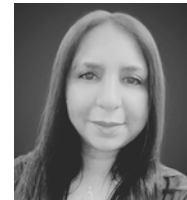
**Nilda La Luz**  
Chief Operating Officer



**Dee Vyas**  
Chief Financial  
Officer



**Illeana Gomez**  
Vice President of Senior  
and Community Services



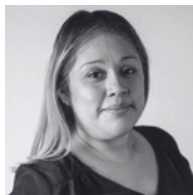
**Nilsa Ramirez**  
Vice President of  
Children's Services



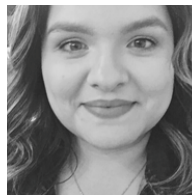
**Laura Reilly**  
Vice President of  
Advancement

## PROGRAM DIRECTORS

### CHILDREN & YOUTH



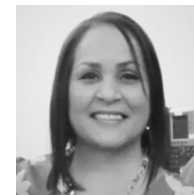
**Patricia Diaz**  
Early Learning Academy  
Center-Based Program  
Program Director



**Isela Serna**  
Early Learning Academy  
Home-Based Program  
Program Director



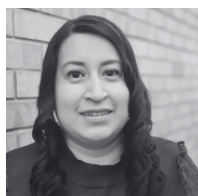
**Destiny Morales**  
School Age Program  
Program Director



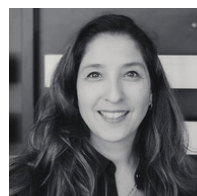
**Mayra Quiñones**  
Adult Wellness Center &  
Home Care Services  
Senior Services Director

### OLDER ADULTS

### INDIVIDUALS & FAMILIES



**Ilse Acevedo**  
Violence Prevention &  
Intervention Program  
Program Director



**Doreen Herrera  
Gauger**  
La Posada, Transitional Housing  
Program Director



**Paula Valencia**  
Intact Family Services Program  
Program Director

# THANK YOU TO OUR DONORS

## \$50,000 and Above

Amazon  
Bezos Family Foundation  
BMO Bank  
Elizabeth Morse Genius Charitable Trust  
Healthy Communities Foundation  
Paul M. Angell Family Foundation



## \$20,000 to \$49,999

Adobe Inc.  
Bank of America  
Chicago Coalition to End Homelessness  
ComEd  
The Field Foundation of Illinois, Inc.  
The Huntington Foundation  
IBuilders Corporation  
Irving Harris Foundation  
Anonymous  
Old National Bank  
Peoples Gas Community Fund  
Russell & Josephine Kott Memorial Charitable Trust  
SC Johnson  
Anonymous  
UnidosUS  
W.P. & H.B. White Foundation  
Leslie B. York



## \$10,000 to \$19,999

The A. Montgomery Ward Foundation,  
Bank of America, N.A., Co-Trustee  
Blowitz-Ridgeway Foundation  
Boka Restaurant Group  
Calmer L. and Gertrude B. Johnson Fund  
Carl R. Hendrickson Family Foundation  
Charles and M. R. Shapiro Foundation, Inc.  
The Chicago Community Trust  
Combined Insurance Company  
Comcast NBCUniversal Foundation  
CVS Caremark Charitable Trust, Inc.  
Fifth Third Bank  
Henrietta Lange Burk Fund,  
Bank of America, N.A., Trustee  
Peoples Gas Company  
PepsiCo  
PNC Bank  
Bruce and Diana Rauner  
Robert R. McCormick Foundation  
Marco Romero  
U.S. Bancorp Foundation

## \$5,000 to \$9,999

Anonymous  
Blue Cross and Blue Shield of Illinois  
Canadian National Railway  
Charities Aid Foundation America  
Chicago Urban League  
Connstruct  
Crowe LLP  
Denk and Roche Builders Inc  
Karina DiDiana  
Ernst & Young LLP  
Heitman LLC  
Mars Wrigley Confectionery  
Marsh & McLennan Companies  
McCortney Foundation  
Start Early  
Walter J. and Edith E. Best Foundation  
Wintrust Financial



# THANK YOU TO OUR DONORS

## \$1,000 to \$4,999

### Individuals

Pablo Acosta  
 Jose and Melinda Alba  
 Jonathan Alvarez  
 Jessica Andujar-Redman  
 Esperanza and Salvador Arana  
 Martin Arteaga  
 Guadalupe Barraza Marquez  
 Miguel Blancarte Jr  
 Abigail M. Brown  
 Rosalio Bueno  
 Richard and Joan Carroll  
 Janie Cervera  
 Dora Cornelio  
 Michael and Cambria Cruz  
 Francisco De Jesus  
 David and Gloria Delgado  
 Jessica Diaz  
 David A. Escontrias  
 Karen G. Fisher, Esq.  
 Jose Gutierrez  
 Harriet Heyda  
 Nathan Ji  
 Christopher Kelly  
 Cynthia Klimmeck  
 Scot Leonard  
 Dr. Rosita Lopez and  
 Anibal L. Taboas  
 Johanna Morales  
 Jonathan Moreno  
 Jessica Munoz  
 Raphael Rastelli  
 Shirley A. Ricks  
 Ricardo Rinconceno

Blanca Rios  
 Dr. Paul W. Roloff and  
 Mary R. Roloff  
 Miguel A. Ruiz, Esq.  
 Mark Shulman  
 Purva Sule  
 Joseph Teller and  
 Christopher Lawrence  
 Megan Toborg  
 Jon Van Wylen  
 DeeVyas  
 Vania Wit

### Organizations

AbbVie Inc  
 ABC 7 Chicago (Disney)  
 Ascension - Saints Mary and  
 Elizabeth Medical Center  
 Barilla America  
 Chaddick Foundation  
 Francis Beidler Foundation  
 George M. Eisenberg Foundation  
 for Charities  
 Hispanic Housing  
 Development Corporation  
 Huntington Bank  
 The Landscaping Experts Inc  
 The Levy Company  
 Mount Sinai Hospital  
 Pajeau Children's Foundation  
 Park Ridge Presbyterian Church  
 Plante Moran, PLLC  
 Related Midwest  
 Tristan & Cervantes, LLP



## \$500 to \$999

### Individuals

Jonas Apelqvist  
 Mac Brachman  
 Robert Claudio  
 Diane Drabicki  
 Diego Estrella  
 Letticia Flores-Poole  
 Karen Freeman-Wilson  
 Claudia Gamboa  
 Haydee Garcia  
 Dr. Illeana Gomez and  
 Jorge G. Gomez  
 Nilda and Angel La Luz  
 Laritza Lopez  
 Susan B. Moser  
 Catherine O'Malley  
 Maria J. Pacheco  
 Sandra Ramirez  
 Adriana Reyes-Villanueva  
 John Sassaris  
 Andrew Tonelli  
 Allison Vann  
 Michelle Velasquez  
 Minyong Yu

### Organizations

Abbott Laboratories  
 Donovan and Heidi Pepper  
 Family Charitable Fund  
 Paul Florsheim Donor Advised Fund

# THANK YOU TO OUR DONORS



## \$100 to \$499

### Individuals

Anastasia Adams  
 Jason Aguiar  
 Mireya E. Almaraz  
 Calixto and Emilia Arroyo  
 Roberto Arroyo  
 Dora Boscan  
 Eva Braxton  
 Tim Brinkmann  
 Matthew Brozovic  
 Marisela Bruno  
 Ben Campos  
 Monica Castrejon  
 Pablo E. Castro-Roman  
 Adela Cepeda  
 Rebeca Cienfuegos  
 Calmetta Coleman  
 Virginia M. Diaz  
 Wanda Diaz-Ortiz  
 Federico Didb Escourido  
 Jeffrey and Marilyn Doering  
 Angelica Fajardo  
 Andres Feng Situ  
 Alex Garcia  
 Eduardo Garcia  
 Horacio Garcia  
 Maria Garcia  
 Sarah Glavin  
 Raul Gonzales  
 Arturo Guerrero  
 Luis Guzman, Jr.  
 Angela Hamilton  
 Aurelia Hernandez  
 Luis Hernandez  
 Sara Hernandez  
 Ann Higby  
 Jennifer Hudson  
 Cambria Isetta  
 Thomas Johnson  
 Maria Jose Castillo Venegas  
 Dr. Yiannis L. Katsogridakis  
 Paul King  
 Hannah Kirby  
 Linda Korbel  
 Megan Krefl  
 Carmen J. Lago  
 John and Jill Levi  
 Jose M. Lliveres

Cesar Lostaunau  
 Raymond Lynch  
 Sharon Maloney  
 Daniel Marcano  
 Bruce Marcus  
 Juan Marquez  
 Guadalupe Martinez  
 Yolanda Martinez  
 Virginia R. Matos  
 Sara Matta  
 Wanda and Kevin McDonald  
 Jose Medina  
 Rebeca Melendez  
 Mayeli Angeles Miguel  
 James Miranda  
 Maritza Morales  
 Pauline and John Munoz  
 Mr. Jose Muñoz  
 Laura Nelsen  
 Judge Rita M. Novak  
 Deborah Oates  
 Chau Ortiz  
 Christina Paez  
 Miguel Paloma  
 Diana Palomar  
 Mauricio Paredes  
 Shirley Paredes  
 Tamara Pawlichka  
 Perfecto and Wanda Perales  
 Maria D. Perez  
 Roberto Perez  
 Sara Radin  
 Judge Cynthia Ramirez  
 Grisel Ramirez  
 Nilsa Ramirez  
 Estela Q. Razo  
 Irmario Rios  
 Ismael Rocha and  
 Elizabeth Gomez  
 Felix Rodriguez, Jr.  
 Marco Rodriguez  
 Edwin Roman  
 Daniel Rosas  
 Alejandra Rubalcava  
 Guillermo and Ligia Sanchez  
 Carlos Saucedo  
 Antone Scott  
 Victoria Shackelford

Rebecca Solano  
 Rosaura Soto  
 Mauri Spampinato  
 Amy Tanner  
 Rebecca Toroney  
 Luis Torrese  
 Carlos Uviedo  
 Victor Vanek and  
 Michelle Homes  
 Juana Vasquez  
 James Vasselli  
 Antoinette Viola  
 Vanessa Walden  
 Samuel White  
 Monica Wilkins  
 Jasmin Zamora  
 Ma De Jesus Zarate  
 Rafael Z. Zendejas  
 Keny Zurita

### Organizations

Allstate Corporation  
 Crowe Foundation  
 De La Salle Institute  
 Exelon Corporation  
 Expedia Group  
 First Congregational Church  
 of La Grange  
 GoDaddy  
 Google Inc.  
 Invenergy  
 Jellyvision  
 JPMorgan Chase Foundation  
 Laura Nelsen  
 LinkedIn Corporation  
 Morningstar Inc  
 Percent Impact Foundation  
 Pinterest  
 Presbyterian Women  
 Stacey and Brian Price  
 Charitable Fund  
 The Northern Trust Company  
 Standard Insurance Company  
 T-Mobile  
 Tom and Victoria Eley  
 Donor Advised Fund  
 U. S. Bank



# WAYS TO GIVE



## One-Time Donation

Your thoughtfulness and generosity will help us serve our participants.



## Monthly Donation

The assurance of ongoing revenue from recurring gifts will help us grow and expedite services to our participants.



## Quarterly Donation

Your financial support offers immediate services and opportunities to participants seeking to transform their life.



## Legacy Giving

Cultivating and stewarding strong relationships with planned gift donations.

### \$100

supports an older adult for one full day at Casa Central's Adult Wellness Center with activities to improve or maintain cognitive, physical, and emotional well being.

### \$500

provides one month of high-quality therapy sessions to assist families as they heal after experiencing domestic violence.

### \$1,000

ensures every child in Casa Central's youth programs receives a full day of nutritious meals, better equipping them to become lifelong learners.

### \$2,500

supplies much-needed improvements and equipment upgrades at Casa Central which will support child and youth computer literacy and adult participation in job training and skills development.

Donate today! [casacentral.org/ways-to-give/](https://casacentral.org/ways-to-give/)

SCAN TO DONATE





## TRANSFORMING LIVES SINCE 1954

Connect with us:

@casacentral  
casacentral.org



---

Founded in 1977, the Council on Accreditation (COA) is an international, independent, nonprofit organization that accredits human and social service providers.

